



Apartment - Conversion (EPC Rating: D)

50A MEADOWBANK ROAD, LONDON, NW9

8LH

Per Calendar Month

£1,550 Per

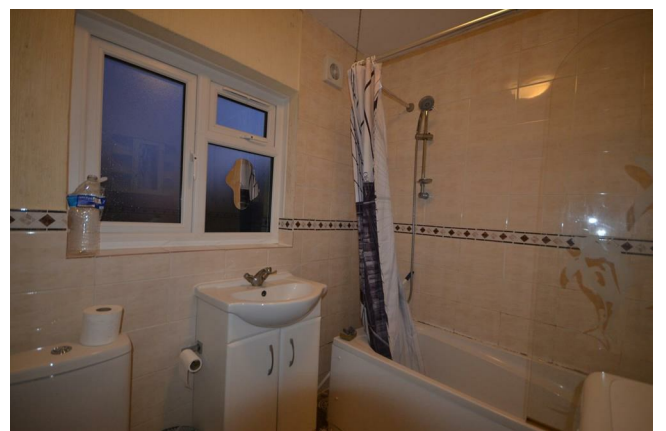


HAYMILLS  
Expertise Experience Engagement



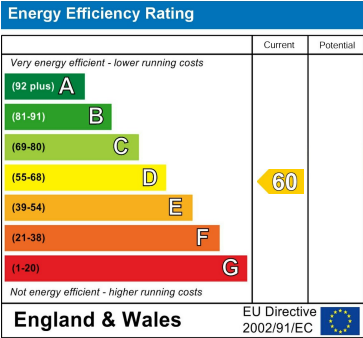
# 1 Bedroom Apartment - Conversion located in London

Lovely 1 bedroom flat floor flat with GARDEN! This 1st floor flat has a spacious lounge, double bedroom, fitted kitchen and modern bathroom. Benefits from having a private rear garden, a large brick outbuilding, double glazing and gas central heating. Close to all amenities and good schools. Must be seen and available NOW



Council Tax Band

Energy Performance Graph



Call us on  
**0208 904 8822**  
[info@haymills.uk](mailto:info@haymills.uk)

Agents Note: Whilst every care has been taken to prepare these particulars, they are for guidance purposes only. All measurements are approximate and are for general guidance purposes only and whilst every care has been taken to ensure their accuracy, they should not be relied upon and potential buyers are advised to recheck the measurements.